

The sixty-five mapped symbol glyphs of the Localizable Sentences 010 font.

Greetings



Good day.



Best regards,



Thank you for responding to my question.

Discussion



The following question has been asked.



My answer is as follows.



No.



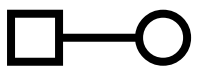
Yes.



Indefinite no.



Indefinite yes.



I do not know.




I need more information in order to be able to answer.




I refuse to answer.

Weather questions

 What is the weather situation where you are located please?

 Is it raining?

 Is it snowing?

 Is it sunny?

 Is it cloudy?


 Is it windy?

 Is it hailing?

 Is it foggy?

Weather statements

 It is raining.

 It is snowing.

 It is sunny.

 It is cloudy.

 It is windy.

 It is hailing.

 It is foggy.

Seasons

 It is spring.

 It is summer.

 It is autumn.

 It is winter.

Digits

 0

 1

 2

 3

 4

 5

 6

 7

 8

 9

Colours general

 The colour is black.

 The colour is brown.

 The colour is red.

 The colour is orange.

 The colour is yellow.

 The colour is green.

 The colour is blue.

 The colour is magenta.

 The colour is grey.

 The colour is white.

 The colour is cyan.

 The colour is pink.

 The colour is dark grey.

 The colour is light grey.

 The colour is sky blue.

Colours precise



The alpha component of the colour has the following value.



The black component of the colour has the following value.



The red component of the colour has the following value.



The yellow component of the colour has the following value.



The green component of the colour has the following value.



The blue component of the colour has the following value.



The magenta component of the colour has the following value.



The cyan component of the colour has the following value.

Colour



What is the colour please?